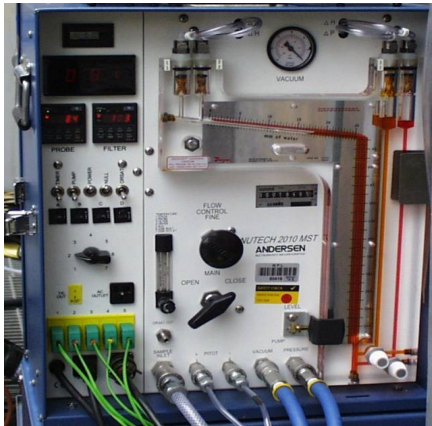


## *Training Course for Iso-Kinetic Sampling*



### **Monitoring For Success**

Phone: +44 (0) 16 33 4315 13  
Mobile: +44 (0) 77 99 6238 91

Email: [rs.brown@oakwood-environmental.co.uk](mailto:rs.brown@oakwood-environmental.co.uk)

### **Background**

Oakwood Environmental Services was established in 2000, to provide focused solutions to a range of Source Emissions, Air Quality and Quality Assurance issues.

We have pioneered the use of technology and it's application to show compliance with environmental legislation.



**Dr Roger S Brown FRSC CChem CSci MICWM**

### **Why are we qualified to provide Training?**

Dr Roger Brown, an ex-chairman of the Source Testing Association has been a Source Emission Testing Specialist for over 25 years. He managed independent monitoring contracts for HMIP and later the Environment Agency and sat on MCerts Committees on behalf of the Source Testing Association during the Introduction of the MCerts Schemes for both Instrumentation and Personnel. Roger has also been trained as a UKAS Technical Assessor.

*Oakwood Environmental  
Services*

**1 Candwr Park  
Newport  
NP18 1HL**

## *Iso-Kinetic Sampling Training Courses*

Training courses are focused to provide tailored instruction in the **use** and **deployment** of Method 5 type sampling trains or MS9096 Trains for the sampling of Particulates and related species.

The course can cover :

### **Particulate Sampling:**

BS EN 13284-1  
BS ISO 9096  
US EPA Method 5

### **Dioxins/Furans and PCBs**

BS EN 1948: 1-4  
US EPA Method 23

### **PAHs: ISO 11228:1**

### **Metals and Mercury Combined:**

BS EN 14385  
BS EN 13211  
US EPA Method 29

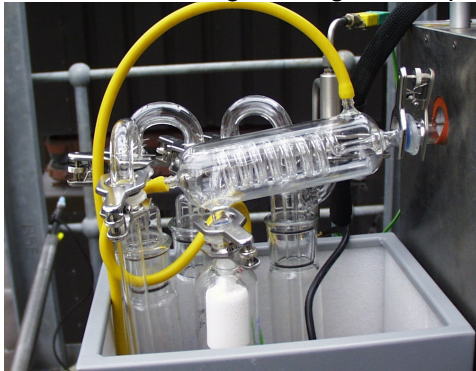
The course is tailored to your specific needs and consists of theory and practice.

In using any technique it is important to know why the Standard you are following has certain specifications. The courses can teach the absolute beginner or the experienced sampler both the theory and practical aspects of sam-

pling. The courses are typically from 2-5 days and usually at your site and using a suitable Stationary Emission Source Stack of your choice close to the classroom sessions.

It covers the basic calculations to determine emission concentrations and mass emissions.

These are very much practical courses involving looking at sample



**En1948 Pt 1 Sampling Train for Dioxin/Furan Measurements**

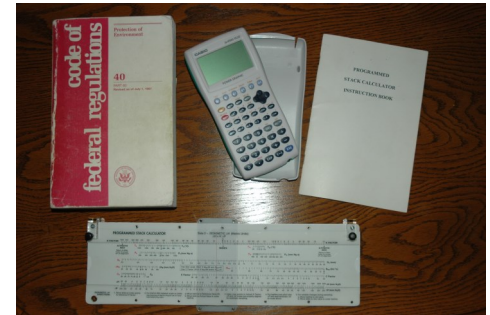
equipment, reviewing how it works and providing a review of the information required to conduct a test .

The course will look at the application of the equipment to the actual sites.

The Courses provide insight into:

- The Methods
- Standards

- Site Specific Protocols



- Health & Safety Requirements
- Calibration of Equipment
- Data collection
- Manipulation of that data
- Reporting
- Quality Assurance and Uncertainty Calculations

Courses can be tailored around your specific work needs and provide a cost effective means of training without staff being sent away.

All courses will cover key material for **MCerts Examinations**

**Other Training Courses are available on application.**